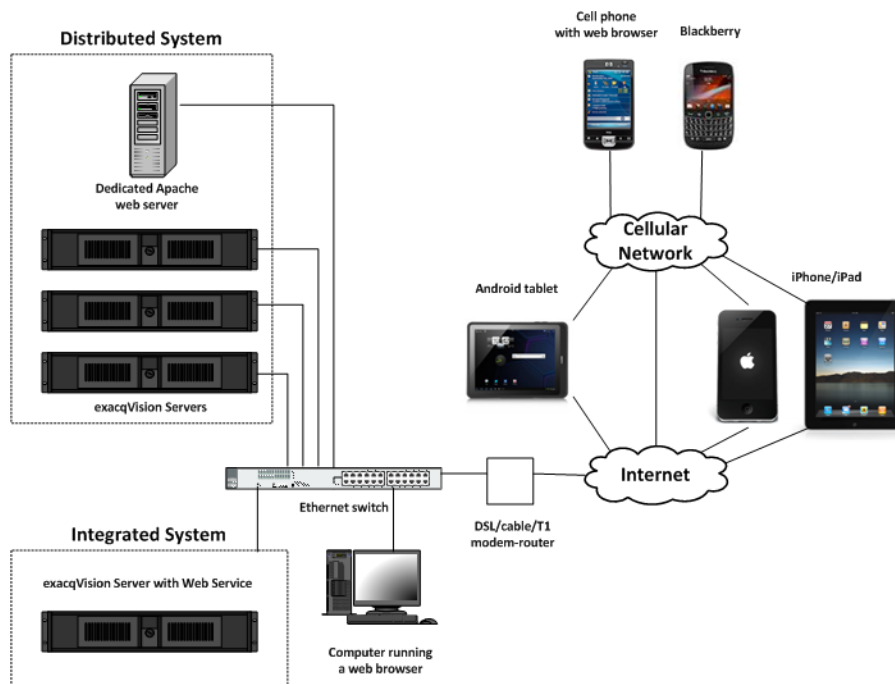


1 Overview and Requirements

The exacqVision Web Service allows you to use a web browser to view live video, search and play back recorded video, and control pan/tilt/zoom functions on cameras connected to exacqVision servers. The Web Service connects to the exacqVision server as a client and transcodes captured video into JPEG files. The service then sends the JPEGs to the browser as fast as requested by the browser, or as fast as possible if the requested rate is too high for the connection.

NOTE: The exacqVision Web Service is pre-installed on all exacqVision A Series and Z Series systems. It can also be installed on EL Series systems that include the CPU upgrade option.

The exacqVision Web Service works with browsers as shown in the following diagram:



The exacqVision Web Service is normally run as an integrated system on an exacqVision Server. Alternatively, a distributed system with a dedicated web server can be used for higher-capacity systems. Video can be viewed on the local network by using a web browser, over the Internet using a web browser, or on a mobile device using a mobile browser or exacqVision application.

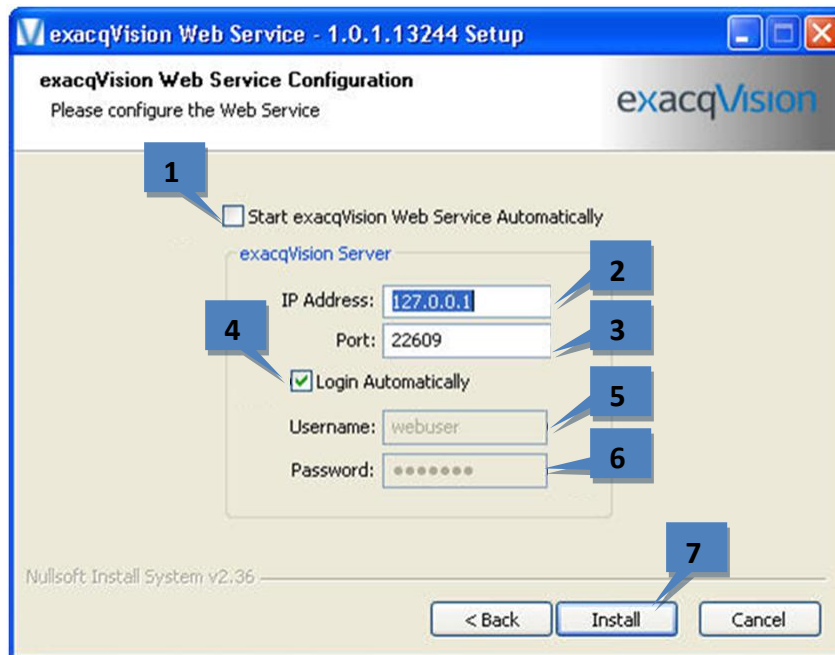
The exacqVision Web Service Simple Interface can be used on any web browser that supports a JPEG image. The exacqVision Advanced Interface is supported on a wide variety of browsers and devices, including:

- Firefox 3.6 or later
- Internet Explorer 7 or later
- Safari 4.0 or later
- Opera 10.0 or later
- iOS 4.2 or later
- Android 2.2 or later

2 Configuring the exacqVision Web Service

The exacqVision Web Service must be enabled before you can use it. To start the Web Service, go to Start, Programs, exacqVision Web Service, and then Start exacqVision Web Service. It is recommended that you configure the service to start automatically in case of a power outage and unexpected system restart.

If the exacqVision Web Service is not installed, download it from www.exacq.com/support/downloads.html. Run the setup file while logged in as the administrator of the server, and complete the following steps using the following illustration as a guide:






1. Select this to start the exacqVision Web Service automatically when the computer starts.
2. Enter the address of the exacqVision Server you will be connecting to. (If the service is running on the exacqVision Server, enter 127.0.0.1.) To connect to more than one exacqVision server, see the Advanced setup options.
3. Enter the port used by the exacqVision Server. By default, the port is 22609.
4. If you want to have an automatic login for web clients, select this box and fill in the Username and Password. If you do not select this option, the system will require the users to enter a username and password each time they log in.
5. Enter the username of the account that the exacqVision Web Service will use to connect to the exacqVision Server.
6. Enter the password of the account entered in the Username field.
7. Click Install.
8. On the Start menu, select All Programs, exacqVision Web Service, and then Start exacqVision Web Service.

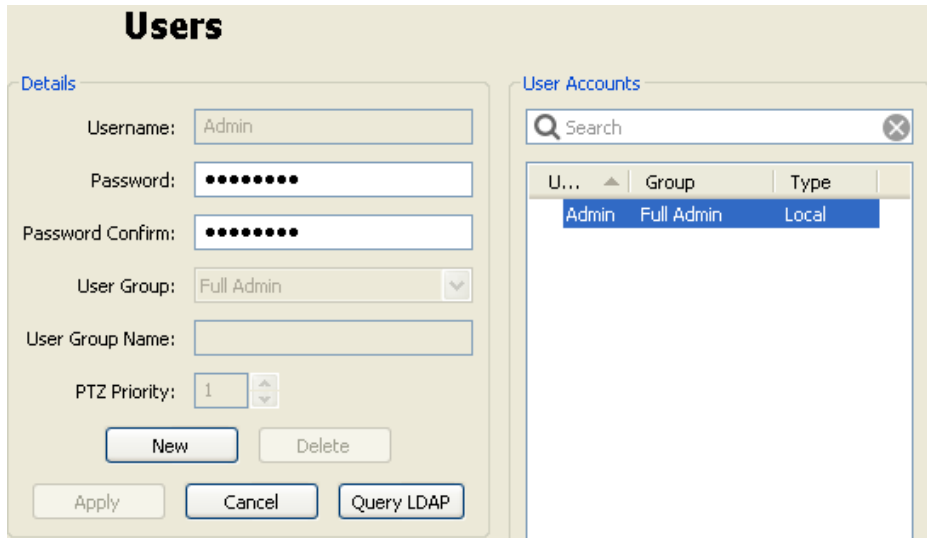
The LightTPD web server is then installed. You can find more information about this service at www.lighttpd.net.

NOTE: The exacqVision Web Service uses a significant amount of computer resources to transcode video. Required resources increase in proportion to the number of simultaneous connections and the data rate of incoming video. Hardware upgrades might be necessary to support heavy Web Service workloads.

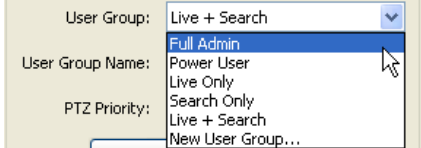
3 Configuring your exacqVision Server

Install exacqVision Client add user accounts to your exacqVision Server that will be used by the exacqVision Web Service to access the cameras. If you selected “Login Automatically” was selected during Web Service configuration, all users will share the designated account. If not, you must create an account for every Web Service user.

To add new users, log in as an administrator, and click the Setup  toolbar button. Expand the server’s setup menu by clicking the plus (+) button next to the exacqVision Server  in the tree, and then select Users . Click the New User button; the Username field is automatically filled with New. Type the name of the new user and then tab to the Password field and enter a new password. Select the Password Confirm field and retype the password.



Open the User Group drop-down box and select the type of access level for this user.

	Full Admin: Access to all features
	Power User: Access to all features except for adding or deleting users
	Live Only: Access limited to viewing live video on all cameras
	Search Only: Access limited to searching for video
	Live + Search: Access limited to viewing live video on all cameras and searching for video

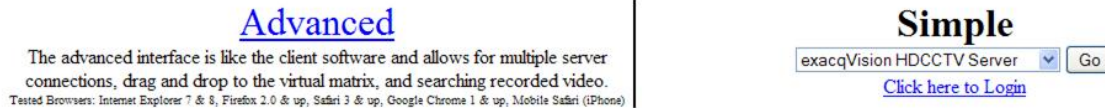
Designate which cameras the user can access for viewing live and recorded video in the Authorized Sources tree, and click the Apply button to add the new user to exacqVision Server. For more detailed instructions, see the User Setup section of the exacqVision User Manual or the context-sensitive online help file.

To verify the configuration, open a web browser on the exacqVision Web Service computer, enter address 127.0.0.1, select the Advanced Interface, log in (if necessary), and confirm that video can be viewed from a connected camera.

4 Selecting a Web Client

The web client has two interfaces: Advanced and Simple. The Advanced Interface is similar to exacqVision Client in its features and functionality; the Simple Interface is more limited in its features, but it works on nearly every web browser in production and is designed for use on mobile phones.

You can use any web browser to run the Web Client by entering the IP Address of the exacqVision Server as the URL. When a user connects using a web browser, the following page appears:



Choose one of the following options:

- Click Advanced to open the Advanced Interface.
- Select a server from the drop-down list and click Go to use the Simple Interface. (Select Click Here to Login to enter a Username and Password when using the Auto Login option.)

The following sections contain instructions for using each type of interface.

5 The Simple Interface

The Simple Interface is designed to provide static images to any web browser that does not fully support JavaScript. This includes most cellular devices.

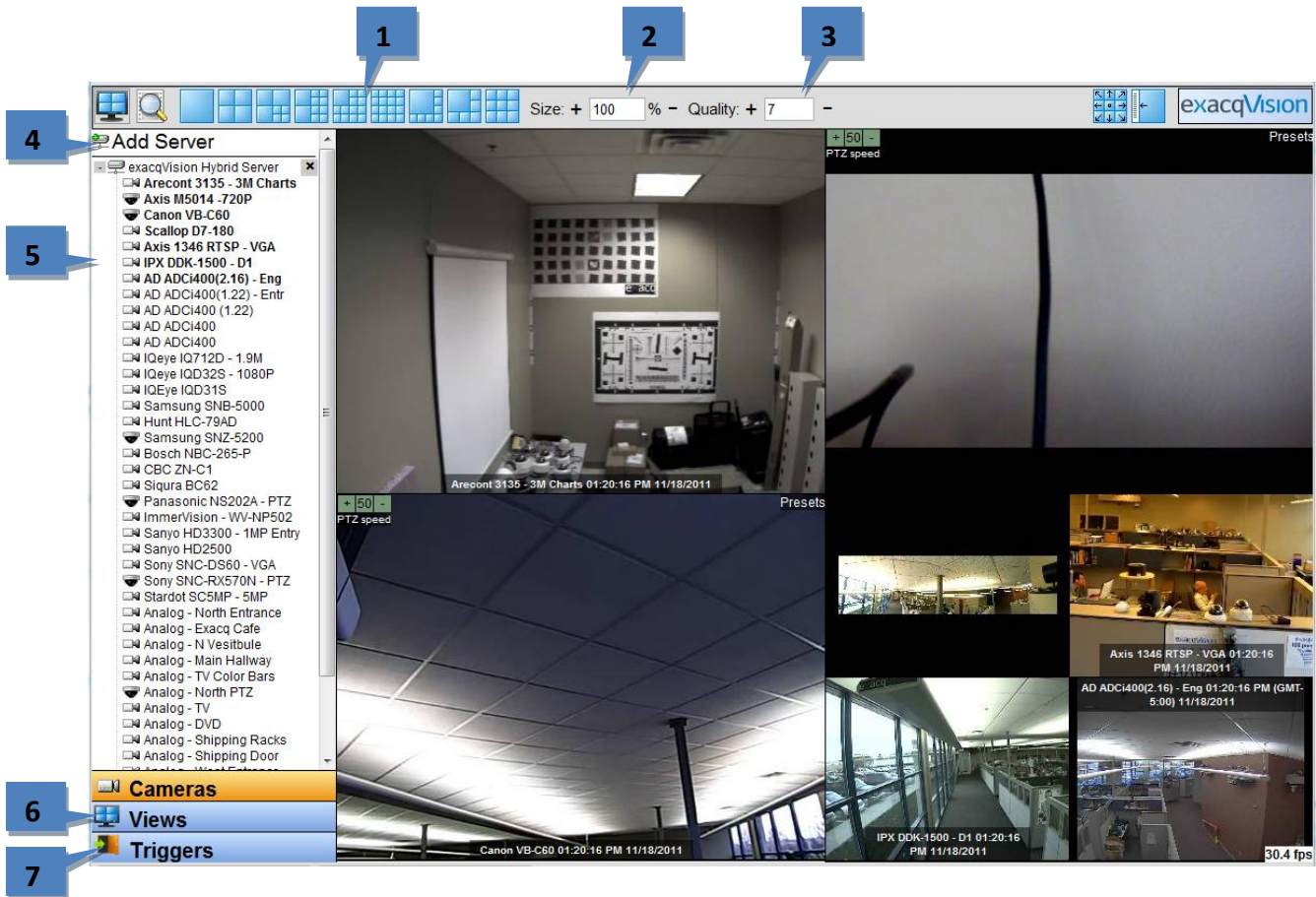
When you first log in to the Simple Interface, a list of the cameras that are available on that server is displayed. Simply click on a link to view live video from that camera.



1. **Refresh:** This displays the most recently captured image.
2. **Size:** Click plus [+](#) to increase the size of the image or minus [-](#) to decrease the size. The smallest size is 128x96 pixels.
3. **Quality:** Click plus [+](#) to increase the image quality or minus [-](#) to decrease the quality. The highest quality is 10 and the lowest is 0. The lower the number, the more pixilated the image appears.
4. **Rate:** This is how many seconds you want to wait until receiving a new image. If your cell phone has difficulty displaying the image before it refreshes, increase this value.
5. **Back:** This displays the list of cameras available to you.
6. **Logout:** This logs out of the current account and allows you to log in as a new user. This appears only if you are not using the automatic login feature.

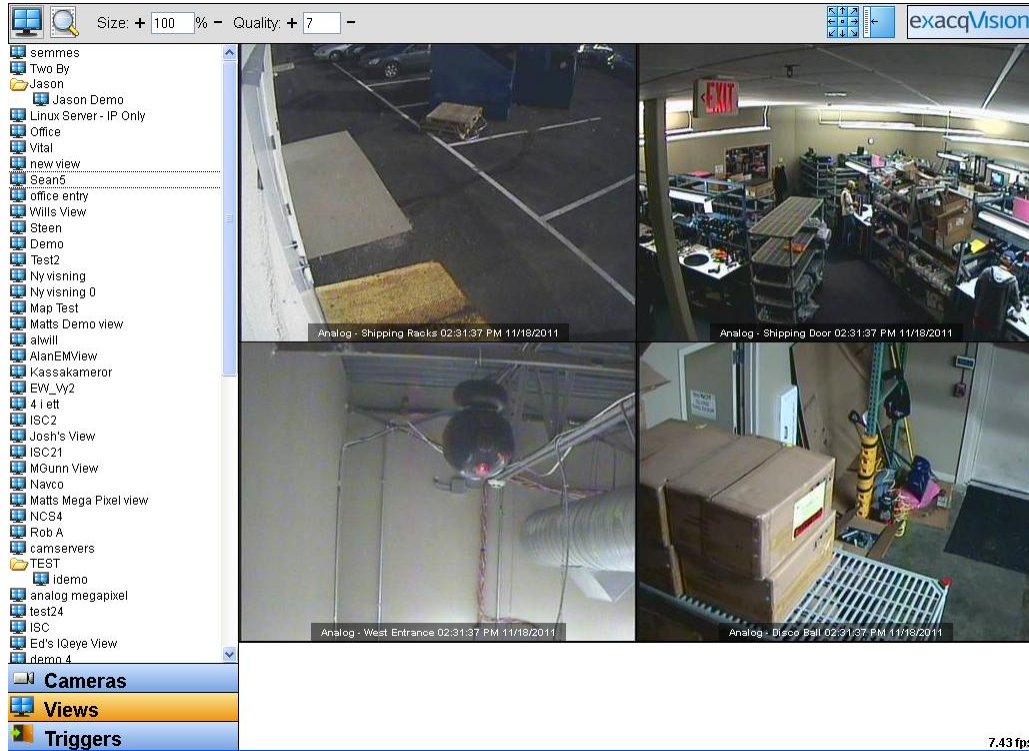
6 The Advanced Interface

The Advanced Interface is designed to be used by most modern web browsers that support JavaScript. To view a camera, simply drag it into the desired panel. Double-click a camera name to fill all the current layout panels, starting with the camera that was double-clicked.

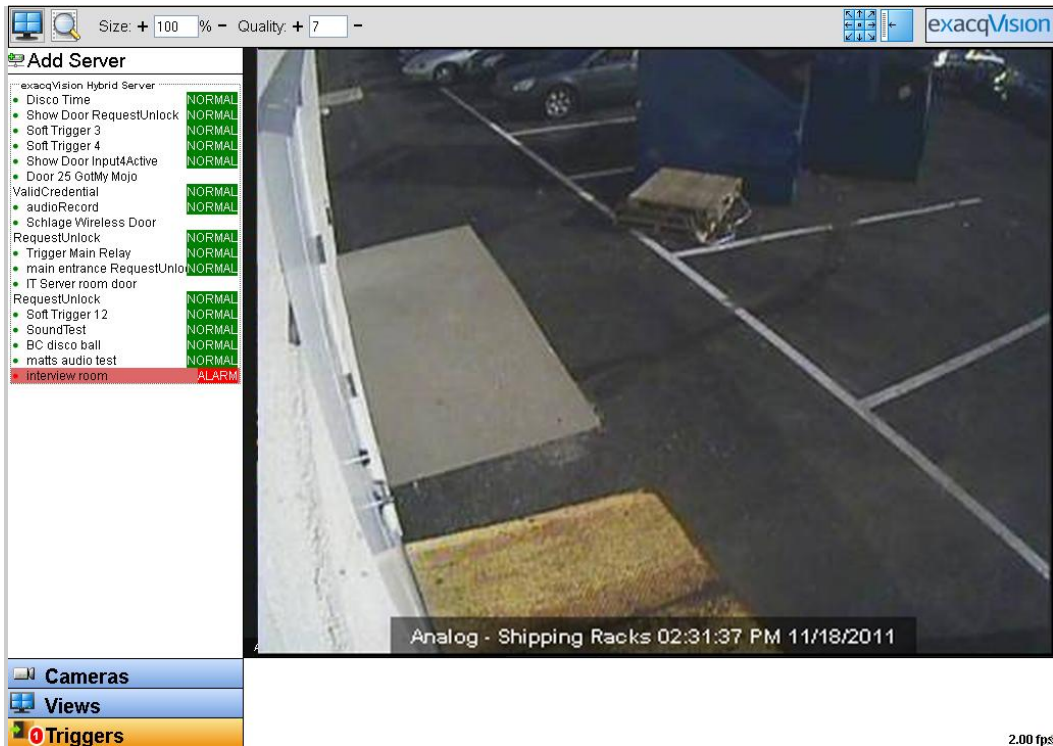


1. **Layout Buttons:** These buttons load a video window layout and allow you to view multiple cameras simultaneously.
2. **Size:** Click plus [+] to increase the image size or minus [-] to decrease the size.
3. **Quality:** Click plus [+] to increase the image quality or minus [-] to decrease the quality. The highest quality is 10 and the lowest is 0. The lower the number, the more pixelated the image appears.
4. **Add Server:** Click Add Server to display a drop-down list that contains all Web Service-enabled servers found on the network. Select a server and click Add.
5. **Cameras List:** Drag any of these cameras into any panel to view the live video.
6. **Views List:** Click Views to open a list of configured camera views (see next page).
7. **Triggers List:** Click Triggers to open a list of configured Triggers (see next page).

When you click the Views button, the Cameras list is replaced by a list of camera views that are configured on the connected servers. Click a view name to open the cameras configured in the camera view.

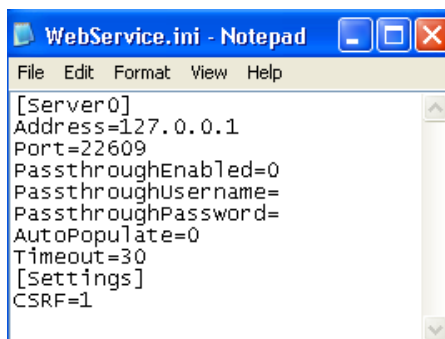


When you click the Triggers button, the Cameras or Views list is replaced by a list of triggers that are configured on the connected servers. Click a trigger name to activate an alarm, and click it again to deactivate the alarm.



7 Configuring Multiple Video Servers

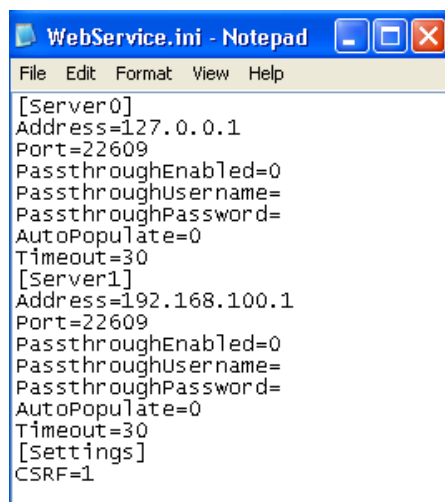
To configure multiple video servers, you must modify the `C:\Program Files\exacqVision\WebService\WebService.ini` file. A standard `WebService.ini` file looks like this:



```
[Server0]
Address=127.0.0.1
Port=22609
PassthroughEnabled=0
PassthroughUsername=
PassthroughPassword=
AutoPopulate=0
Timeout=30
[Settings]
CSRF=1
```

- **[ServerX]** is the server number, where X ranges from 0 to 15.
- **Address** is the IP Address of the exacqVision Server.
- **Port** is the port used by the exacqVision Server. By default, the port is 22609.
- **PassthroughEnabled** allows a user to log in without credentials. (1=enabled, 0=disabled)
- **PassthroughUsername** is the account used by the exacqVision Web Service to connect to the exacqVision Server. This functions like all the other accounts on the system.
- **PassthroughPassword** is the corresponding password of the account used as the PassthroughUsername.
- **AutoPopulate** is used to automatically pass through enabled servers. (1=enabled; 0=disabled)
- **Timeout** is the number of seconds that a search request will wait for results before timing out. The Timeout line is not included by default and must be added manually if desired.
- **CSRF** enables protection against cross-site request forgery exploits. CSRF applies to all servers and should remain under the [Settings] line. (1=enabled; 0=disabled)

To add a server, copy the entire [Server0] section and paste it above the [Settings] section, and then change the information for the added server as desired. Be sure to increment the number of the server; for example, the first line for the second server would be [Server1], and for a third server it would be [Server2]. The `WebService.ini` file for two servers might look like this:



```
[Server0]
Address=127.0.0.1
Port=22609
PassthroughEnabled=0
PassthroughUsername=
PassthroughPassword=
AutoPopulate=0
Timeout=30
[Server1]
Address=192.168.100.1
Port=22609
PassthroughEnabled=0
PassthroughUsername=
PassthroughPassword=
AutoPopulate=0
Timeout=30
[Settings]
CSRF=1
```


8 Network Configuration

If you want to allow clients from outside your local area network access your exacqVision Web Service, you must change your router settings to forward port 80 to the Web Service's IP address. See your router user manual or go to www.portforward.com/routers.htm for instructions.

Alternatively, you can change the exacqVision Web Service port number. To do this, edit the following configuration file (the location and name of the file varies depending on the operating system where the Web Service is installed):

- **Windows:** C:\Program Files\exacqVision\WebService\LightTPD\conf\lighttpd-inc.conf
- **Linux:** /etc/lighttpd/lighttpd.conf

In the configuration file, find the following entry:

```
## bind to port (default: 80)
#server.port = 81
```

Change the port number in the second line and remove the number sign. For example, if you want to change the port number to 1111, the entry should be changed as follows:

```
## bind to port (default: 80)
server.port = 1111
```

Save the file and restart the exacqVision Web Service to begin using the new port number.

NOTE: If the exacqVision Web Service is reinstalled or upgraded, the port number could be reset to the default (80). After reinstalling or upgrading the Web Service, open the lighttpd.conf file and ensure that the port number is configured as desired.

9 Configuring exacqVision Web Service in Linux

To set up exacqVision Web Server on a Linux system, complete the following steps:

1. Install the `exacqVisionWebService.deb` file.
2. Open the Terminal from the Start/Accessories menu.
3. Type the following command: **`sudo /usr/local/exacq/webservice/service.sh stop`**
4. Type **`sudo gedit /etc/webservice.conf`** and enter the root password.
5. Configure the Web Service using section 7 of this document (“Configuring Multiple Video Servers”) as a guide.
6. In the Terminal, run the following command: **`sudo /usr/local/exacq/webservice/service.sh automatic`**. This ensures that the service starts every time the system is started.
7. Run the following command: **`sudo /usr/local/exacq/webservice/service.sh start`**. This starts the Web Server.

You should now be able to open a web browser on the server and enter `http://127.0.0.1` as the address. This opens a login page (or passthrough page) with the Web Server options Simple and Advanced.

10 Upgrading from LightTPD to Apache

LightTPD is the default web server provided with exacqVision. For greater performance with five or more simultaneous exacqVision Web Service connections, it is recommended that you switch to Apache on a dedicated web server. To do this, complete the following steps:

1. Run Start->Programs->ExacqVision Web Service->Stop ExacqVision Web Service.
2. Disable LightTPD service if it is enabled. To do this, select Start, Run, and then services.msc to start the Service Control Manager.
3. Scroll down to the LightTPD Web Server entry. Right-click and select Properties. Select Disabled as the Startup Type.

4. Install Apache 2.2.13 from:

http://archive.apache.org/dist/httpd/binaries/win32/apache_2.2.13-win32-x86-no_ssl.msi

Choose the option to install for all users and listen on port 80. Accept the Typical installation option.

5. Extract mod_scgi.so from <http://bigonez.googlepages.com/scgi-1.13-apache-2.2.13.zip> to C:/Program Files/Apache Software Foundation/Apache2.2/modules.
6. From the Start menu, select Programs, Apache Http Server, Configure Apache Server, and then Edit the Apache httpd.conf.
7. Add this line:

```
LoadModule scgi_module modules/mod_scgi.so
```

8. Change this line:

```
DocumentRoot "C:/Program Files/Apache Software Foundation/Apache2.2/htdocs"
```

to:

```
DocumentRoot "C:/Program Files/exacqVision/WebService/LightTPD/htdocs"
```

9. Change this line:

```
<Directory "C:/Program Files/Apache Software Foundation/Apache2.2/htdocs">
```

to:

```
<Directory "C:/Program Files/exacqVision/WebService/LightTPD/htdocs">
```

10. Add the following lines at the end:

```
SCGIMount / 127.0.0.1:5710

<LocationMatch ".*">
    SCGIHandler Off
</LocationMatch>

<LocationMatch "^/([a-zA-Z]+).web(.*)">
    SCGIHandler On
</LocationMatch>
```

NOTE: If you have updated a previous version of exacqVision Web Service to use Apache, be sure to remove these lines that were added to the end of the httpd.conf file:

```
RewriteEngine on
RewriteRule "^/([a-zA-Z]+).web(.*)" "/cgi-bin/$1.exe$2" [PT]
```

11. From the Start menu, select Run and then services.msc to start the Service Control Manager. Scroll down and select exacqVision Web Service, and then click Start.
12. Open Windows Firewall to Apache from Start, Settings, Control Panel, Windows Firewall. Select the Exceptions Tab. Click Add Program and browse to C:\Program Files\Apache Software Foundation\Apache2.2\bin\httpd.exe.
13. Start Apache from Service Control Manager.

NOTE: Do not use the start/stop entries in Start, Programs, exacqVision Web Service. These start the LightTPD web server. You can delete them by removing the links in C:\Documents and Settings\All Users\Start Menu\Programs\exacqVision Web Service.