

# 1 Requirements

The purpose of this integration guide is to demonstrate the process of integrating Kantech EntraPass access control system with exacqVision VMS system.

### Software version requirements

- exacqVision Server version 5.8.2 or later with Professional license
- Entrapass version: 6.01 or later

# 2 Installation

### Prepare the exacqVision server

- Create an account with administrator privileges on the exacqVision server to be used by EntraPass.
- Note the IP address of the machine that exacqVision server is running on.

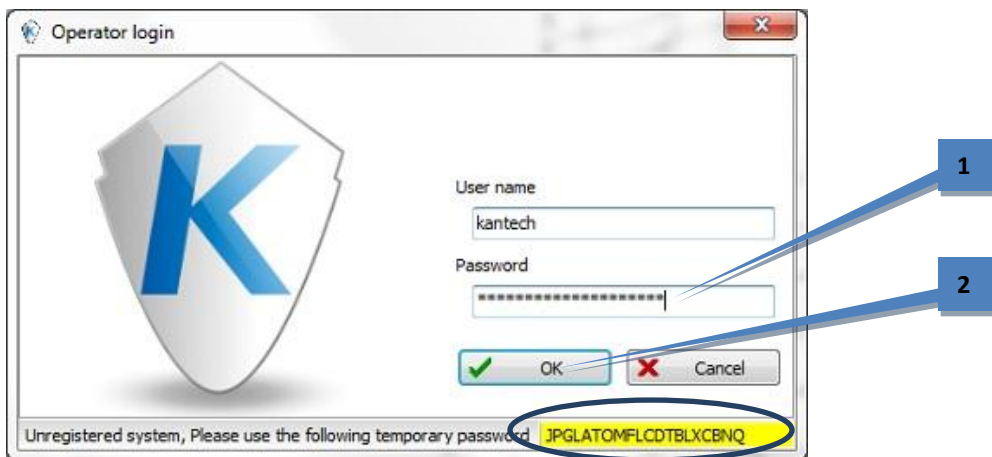
### Install Entrapass

Install EntraPass as directed in the EntraPass installation directory folder (**DOCUMENTS**). These documents can also be found in the “C:\Program Files (x86)\Kantech\Server\_xE\Document” folder after installation. After EntraPass is installed, the installer can log in to the un-registered version for setting up the integration.

Double-click the icon on the Desktop to launch EntraPass:

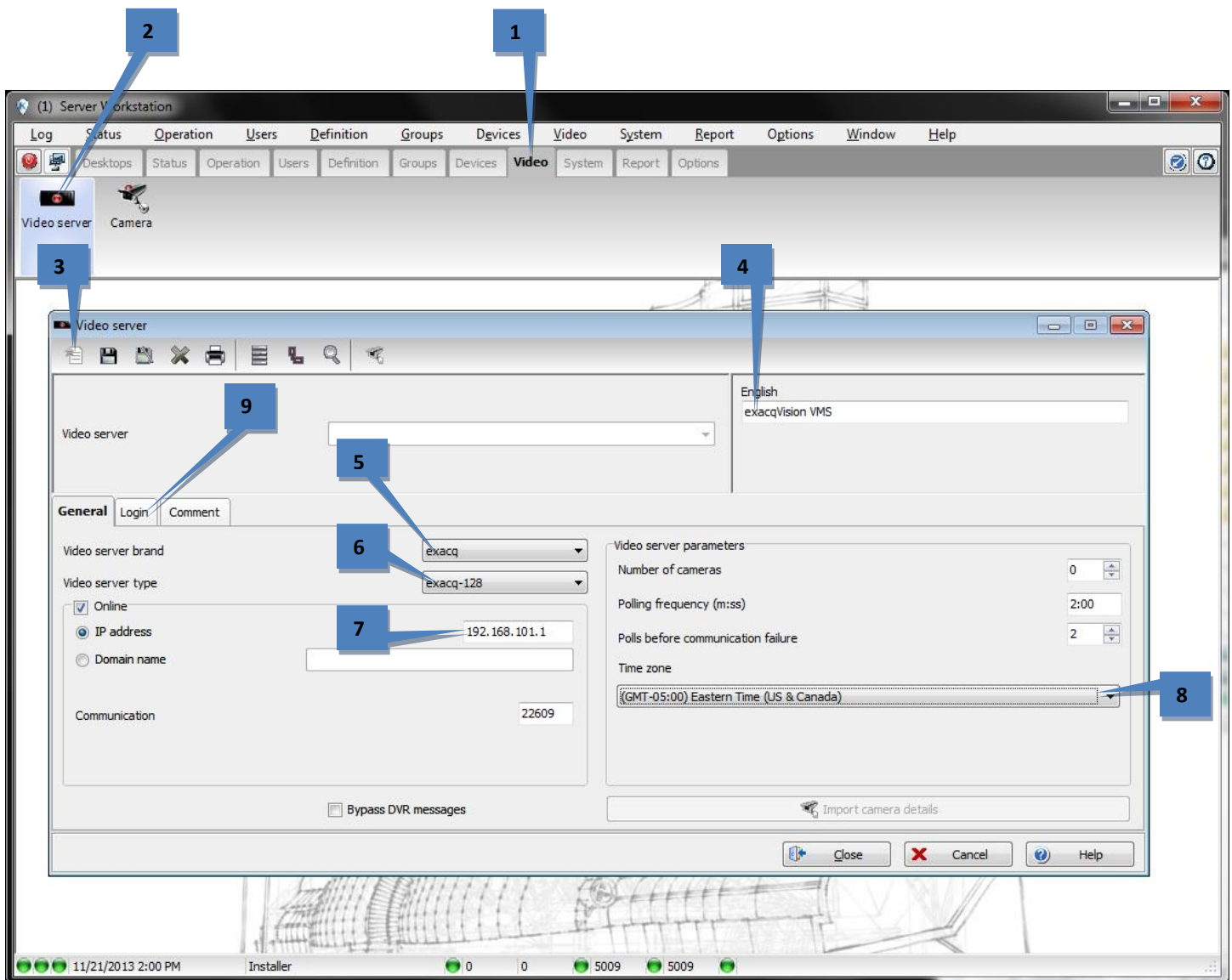


1. Enter the automatically generated password found highlighted in yellow.
2. Click OK.

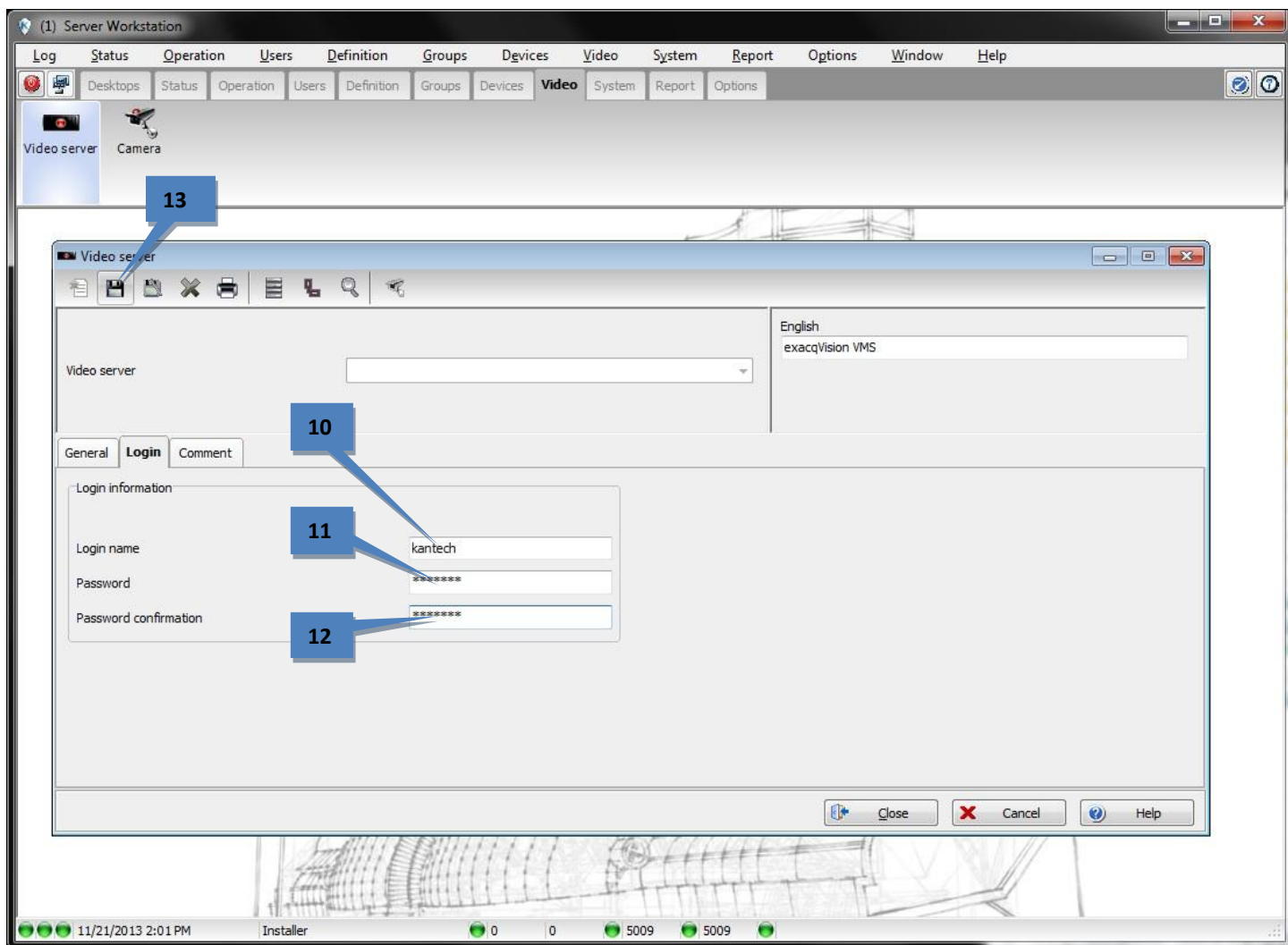


## Configuring an exacq VMS

1. Select the Video tab.
2. Click Video Server.
3. Click the New icon.
4. Enter a name.
5. Select "exacq" from the Video Server Brand drop-down list.
6. Select the approximate number of cameras connected to the exacqVision VMS from the Video Server Type drop-down list.
7. Enter the IP address of the exacqVision server.
8. Select the time zone from the Time Zone drop-down list.
9. Select the Login tab.

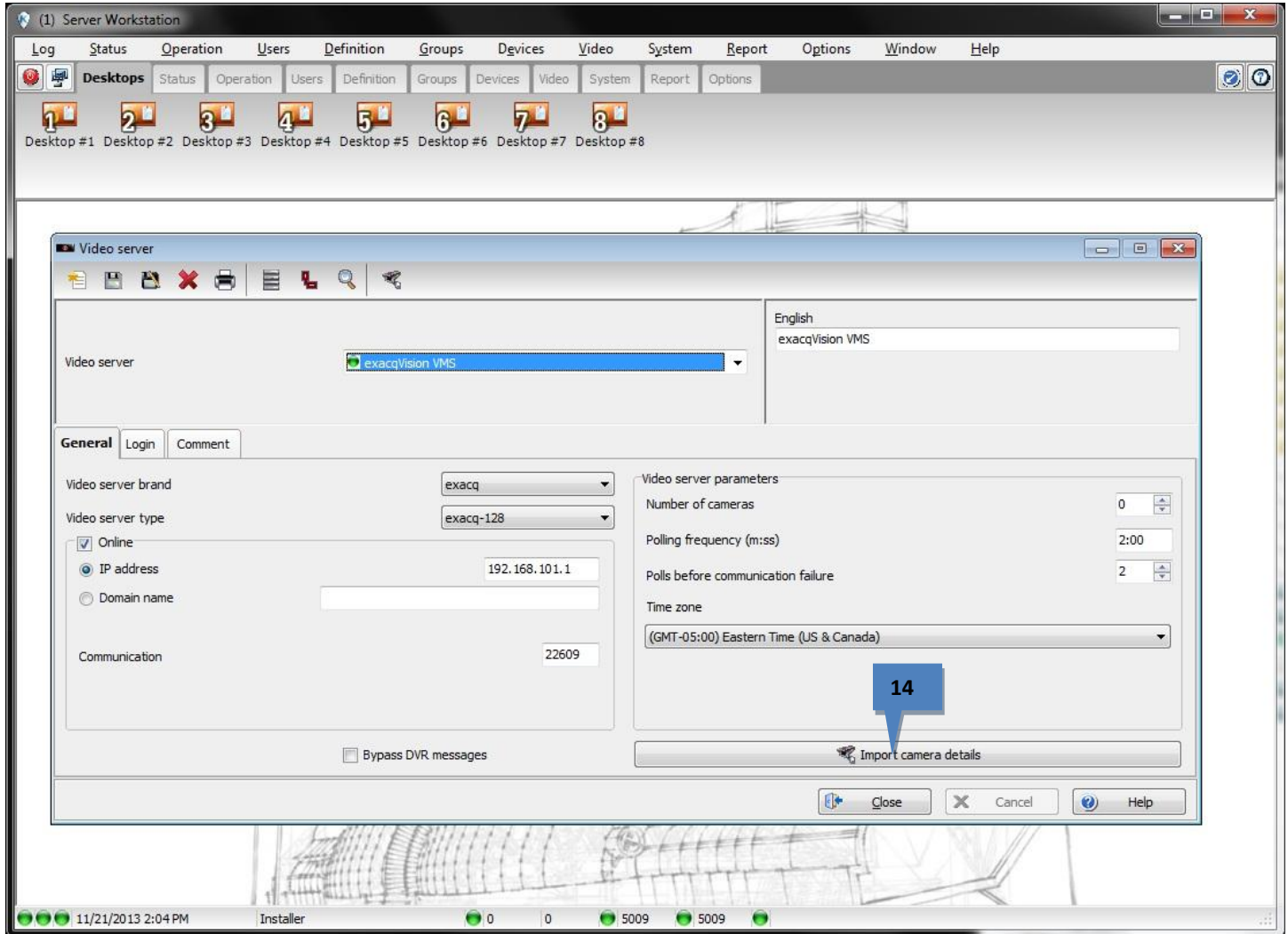


10. Enter the username of the account that was created on the exacqVision server for use with EntraPass.
11. Enter the password of this account.
12. Confirm the password.
13. Click Save.

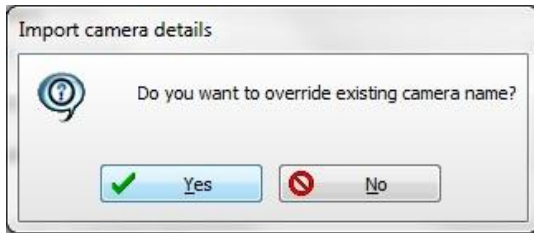


The General tab then opens. Note that the Video Server field now contains the name entered in step 3, and it should be accompanied by a green indicator.

14. Click Import Camera Details.



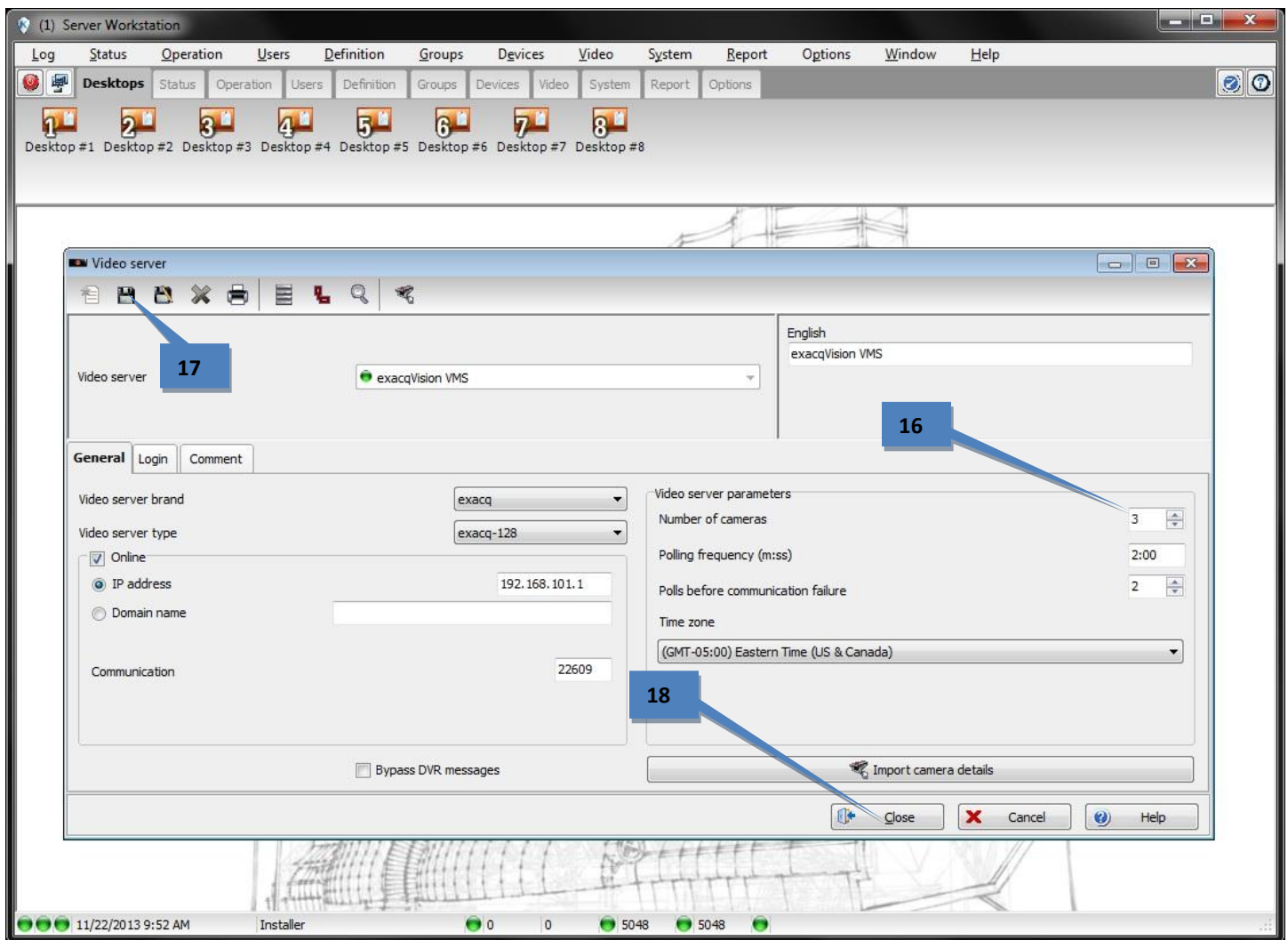
15. Click Yes in the pop-up window to override the existing camera name.



16. Verify that the number of cameras detected here is correct (three in this example).

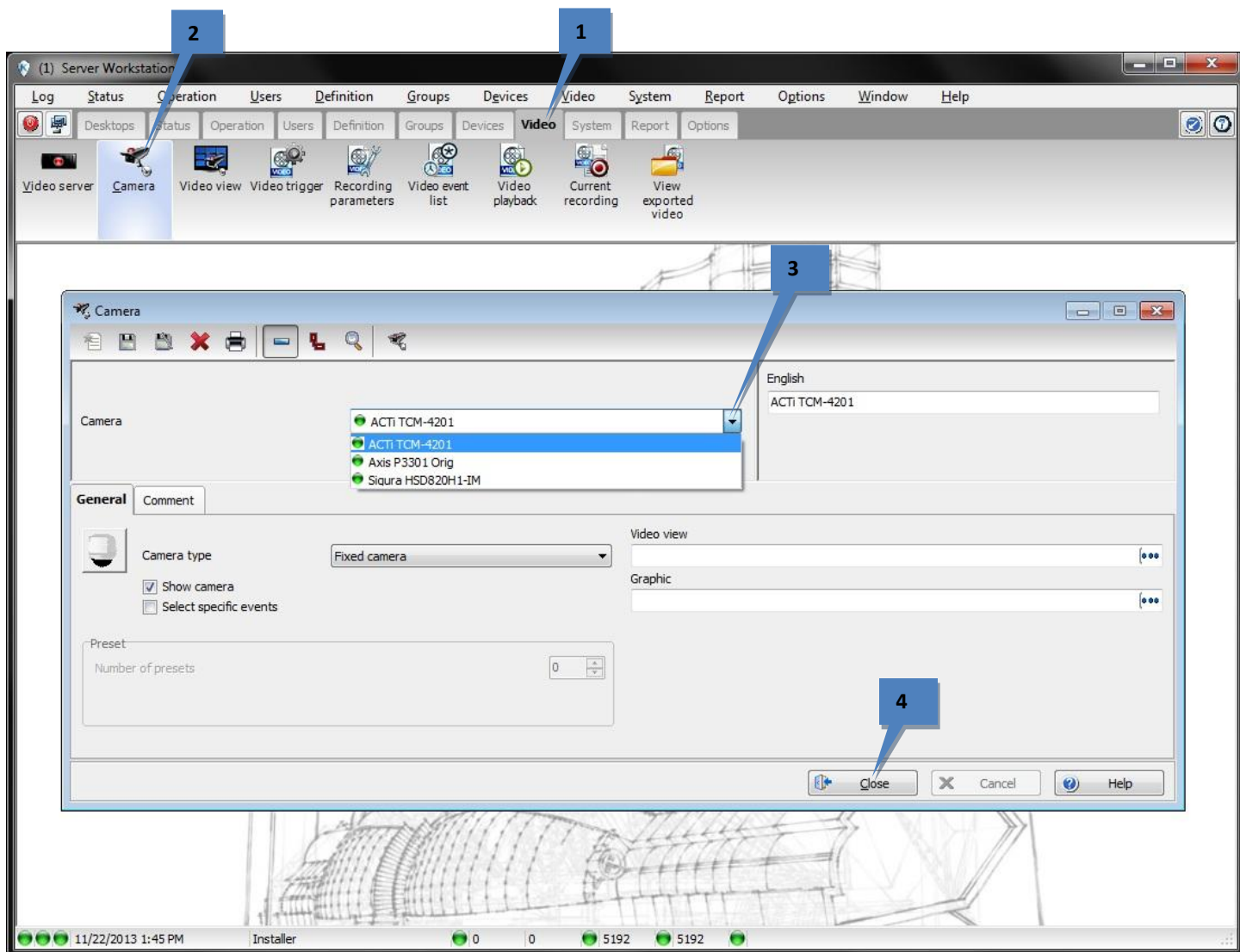
17. Click Save.

18. Click Close.



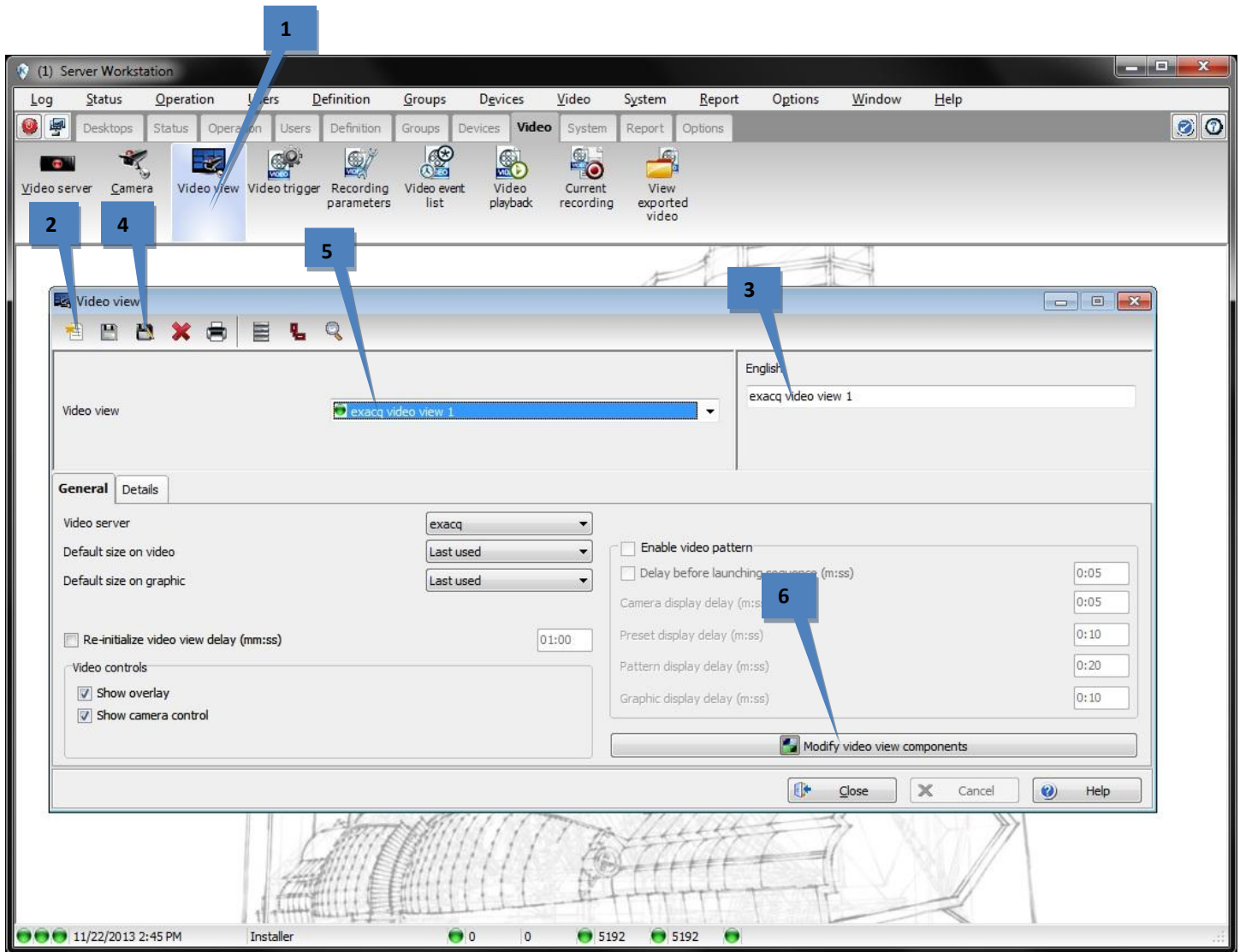
Verify camera detection

1. Select the Video tab.
2. Click Camera.
3. Verify that the cameras are correctly in the Camera drop down list.
4. Click Close.

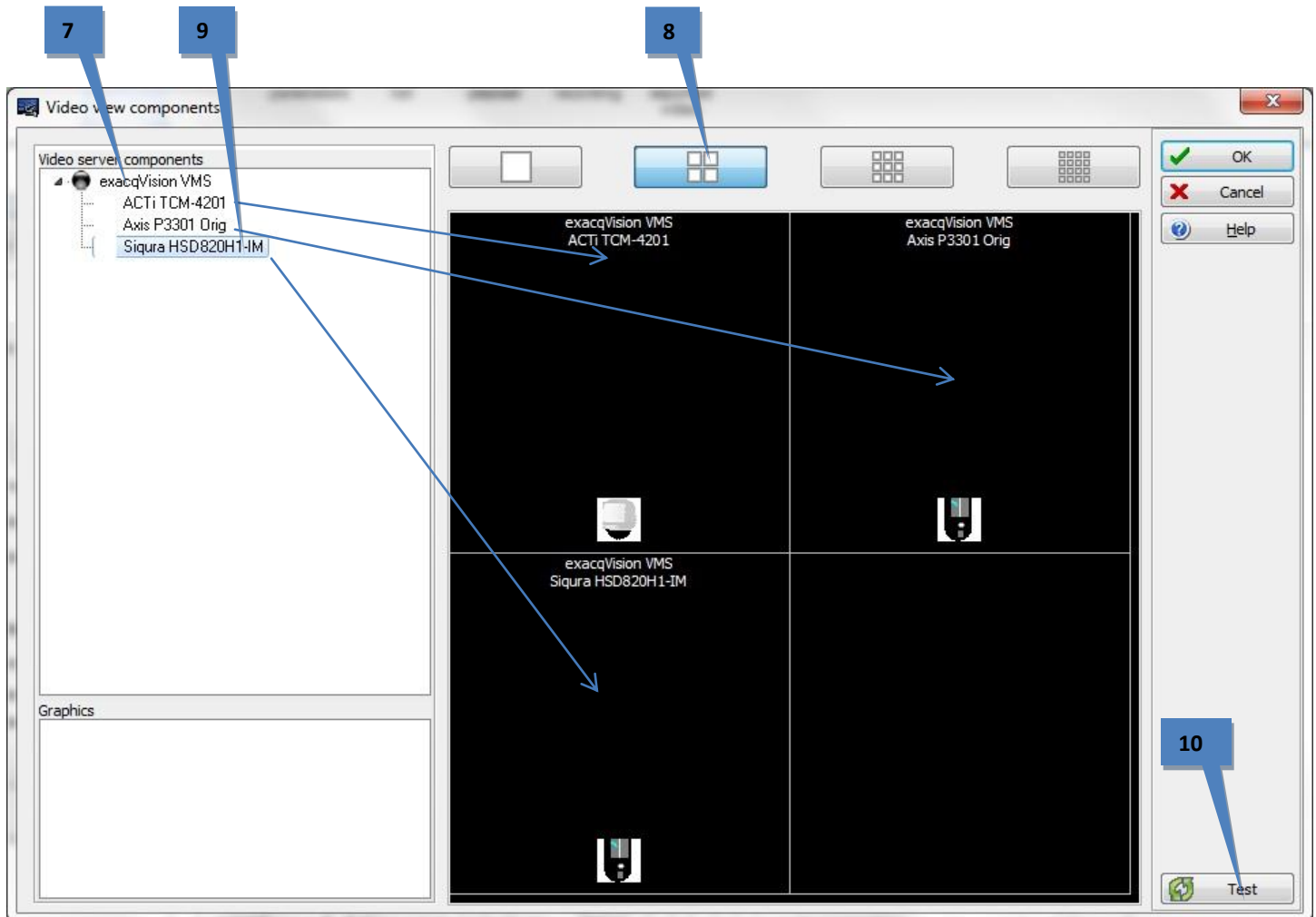


Create a view and verify live video

1. Click Video View.
2. Click New.
3. Enter a name.
4. Click Save.
5. The name is now displayed in the Video View field.
6. Click Modify Video View Components.



7. On the Video View Components page, verify that the list of components is correct .
8. Choose an appropriate number of camera panes.
9. Click and drag some cameras onto the panes.
10. Click Test.

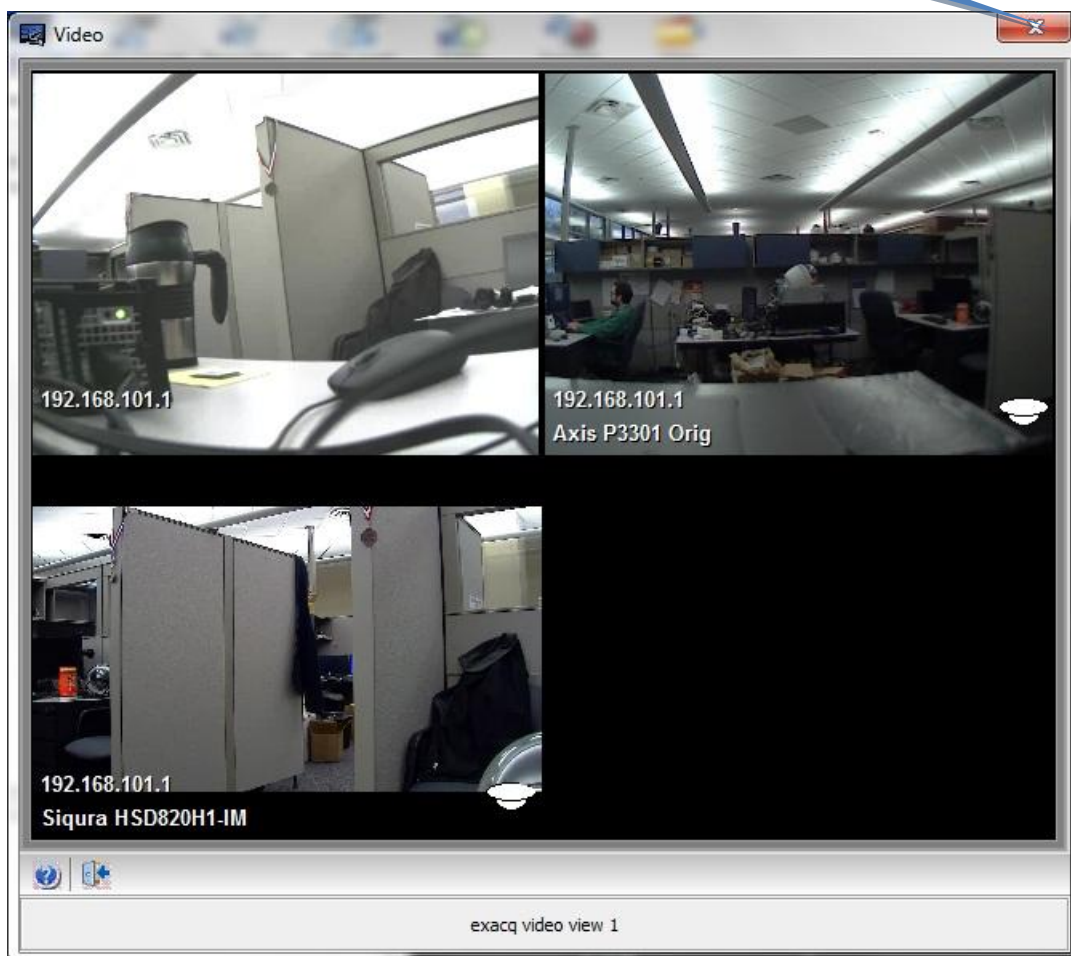




A window displaying live feeds is displayed. This verifies that the cameras are configured correctly.

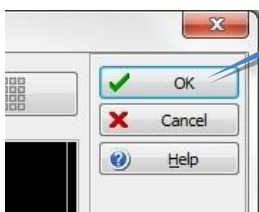
11. Click X to close.

11

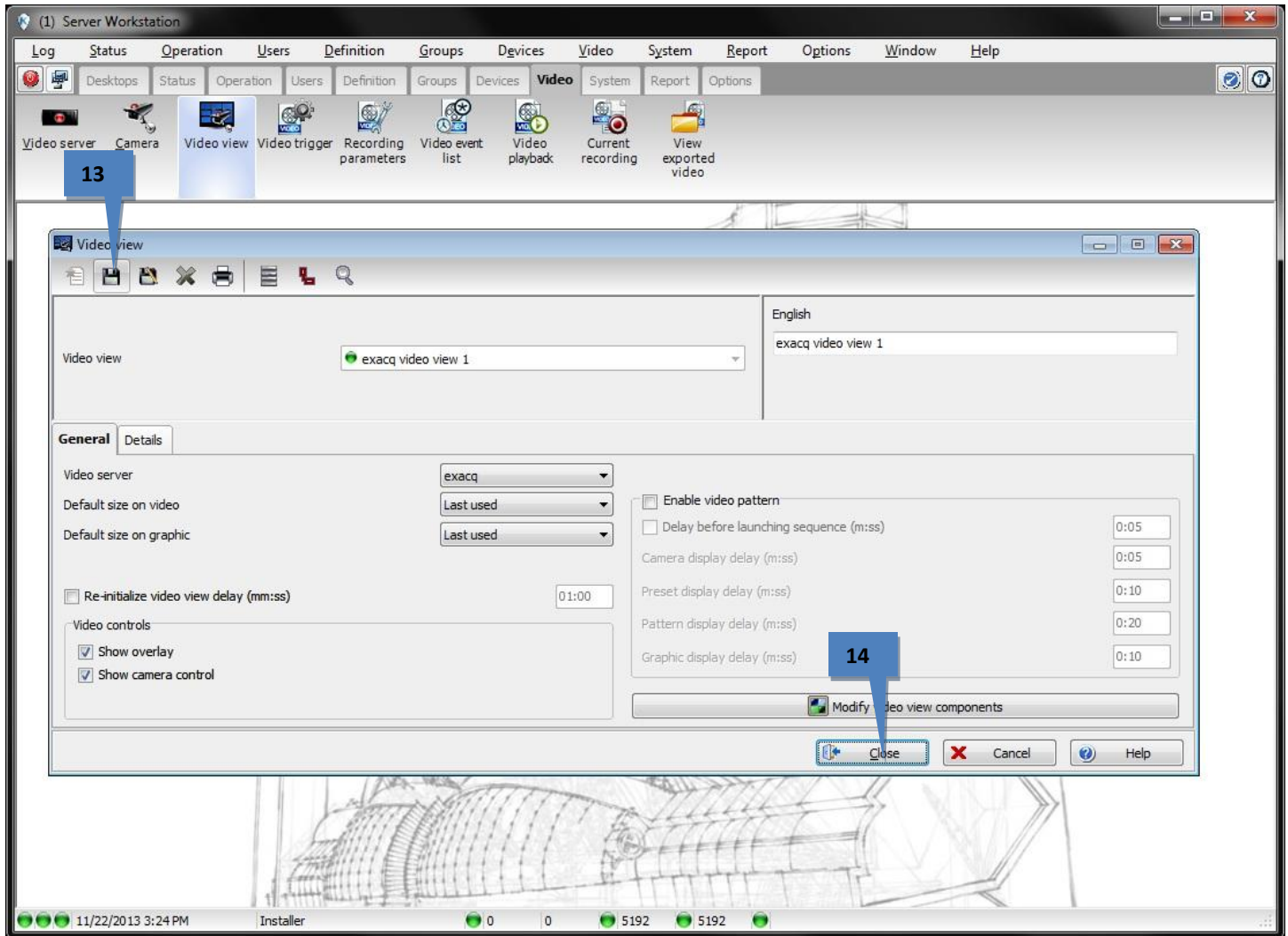


12. Click OK on the Video view components window

12



- 13. Click Save.
- 14. Click Close.



**Conclusion**

Now the exacqVision system has been integrated with Kantech Entrapass. Soft triggers and event links can be verified by looking at the Event Links page on the exacqVision server. Entrapass will automatically create these on the exacqVision system. PTZ Presets can also be verified by viewing the Camera configuration screen shown earlier.

For further instruction on more advanced features and functions, please see the Kantech Entrapass user manual.

### 3 exacqVision Event Triggering

Any access control event in EntraPass can be programmed to actuate soft triggers in exacqVision. If the soft trigger does not exist on the exacqVision server, or if it has been deleted, EntraPass will create a new soft trigger and associated event link to start the recording.

- Access - Door unlocked
- Access - Second entrance
- Access denied
- Access denied - Alarm system armed
- Access denied - Area full
- Access denied - Area not clear
- Access denied - Bad access level
- Access denied - Bad card status
- Access denied - Card already busy
- Access denied - Card expired
- Access denied - Card lost or stolen
- Access denied - Card not load in controller
- Access denied - Card pending
- Access denied - Card unknown
- Access denied - Disabled tenant
- Access denied - Door armed - alarm interface
- Access denied - Door manually disabled
- Access denied - Dual custody
- Access denied - Interlock active
- Access denied - Invalid access schedule
- Access denied - Keypad disabled
- Access denied - Keypad locked
- Access denied - local area full
- Access denied - Minimum passback delay
- Access denied - Not enough cards
- Access denied - Number supervisor/area
- Access denied - Passback bad location
- Access denied - Reach card count (Card count limit reached)
- Access denied - Reader or keypad locked
- Access denied - Supervisor level required
- Access denied - Tenant card unknown
- Access denied - Tenant expired
- Access denied - Tenant not loaded in KTES
- Access denied - Tenant pending
- Access denied - Waiting for approval
- Access denied - Waiting second card
- Access denied by tenant
- Access door unlocked (Tenant)
- Access granted
- Access granted - Passback bad location
- Access granted (Tenant)
- Access granted by tenant
- Access level definition modified
- Access level group definition modified
- Access process completed
- Account modified
- Acknowledge
- Acknowledge suspended
- Acknowledge time-out
- Add site to connection list
- Alarm duress
- Alarm duress on door
- Alarm key alarm
- Alarm key alarm restore
- Alarm log added
- Alarm message flag
- Alarm message unflag
- Alarm supervision - reader found
- Alarm system activated
- Alarm system armed
- Alarm system armed (Alarm level 1 active)
- Alarm system armed (Alarm level 2 active)
- Alarm system deactivated
- Alarm system disarmed
- Alarm system force arming device alarm reported
- Alarm system input shunted - entry delay
- Alarm system input unshunted - entry delay
- Alarm system manually armed
- Alarm system manually disarmed
- Alarm system modified
- alarm system not ready - alarm interface
- Alarm system postpone count zero
- alarm system ready - alarm interface
- Alarm system relay activated
- Alarm system relay deactivated
- Application automatic update
- Archive backup automatic
- Archive backup automatic - Completed
- Archive backup automatic - Failed
- Archive backup by operator
- Archive merged from redundancy server
- Archive restored by operator
- Archive restored from redundancy server
- Area closed
- Area definition modified
- Area full
- Area group modified
- Area not full

- Area opened
- Area status request
- Arming aborted
- Arming postponed
- Automatic report requested
- Auxiliary action by tenant
- Auxiliary output definition modified
- Bad code on keypad
- Bad login on Server
- Bad Login on Smartlink
- Bad Login on Workstation
- Bad sequence - guard tour
- Badging layout modified
- Begin reloading, GSI procedure
- Begin reloading, Server procedure
- Beginning of a guard tour
- Billing report created
- Broadcast IP device succeeded waiting for heartbeat
- Browse Video Vault
- Call aborted by visitor
- Calling tenant
- Camera advanced motion alarm activated
- Camera advanced motion alarm restored
- Camera alarm activated
- Camera alarm restored
- Camera light alarm activated
- Camera light alarm restored
- Camera modified
- Camera motion alarm activated
- Camera motion alarm restored
- Camera museum activated
- Camera museum restored
- Camera override activated
- Camera override restored
- Camera perimeter activated
- Camera perimeter restored
- Camera tamper alarm activated
- Camera tamper alarm restored
- Camera text alarm activated
- Camera video lost
- Camera video restored
- Cannot process card on Card Gateway
- Card Access Group modified
- Card access level expired
- Card Archive modified
- Card definition modified
- Card expired
- Card filter modified
- Card location in bad area
- Card pending on service
- Card position manually modified
- Card traced
- Card Type modified
- Cards counter In - Out
- Cards exported
- Change automatic backup parameters
- Change badge printout credential
- Change card format
- Change card label
- Change keypad family
- Change log printer
- Change MAC account billing information
- Change master password
- Change operating language
- Change priority from connection list
- Change programmables messages
- Change Sound and Video parameters
- Change system parameters
- Clean Server database
- Clear connection list
- Cluster modified
- Connect this site next
- Connection for site synchronisation
- Controller AC power failed
- Controller AC power restored
- Controller Auxiliary power failure
- Controller Auxiliary power restored
- Controller battery power failure
- Controller battery power restored
- Controller cards list cancelled by operator
- Controller cards list requested by operator
- Controller cards moved by operator
- Controller communication failed
- Controller communication failure with Aurora
- Controller communication failure with MCU
- Controller communication restored
- Controller communication restored with Aurora
- Controller communication restored with MCU
- Controller date time RTC reading failure
- Controller date time RTC reading restore
- Controller DC power failed
- Controller DC power restored
- Controller definition modified
- Controller detailed status requested by operator
- Controller eeprom reading failure
- Controller execute program memory startup
- Controller execute program parity failure
- Controller firmware
- Controller firmware reload start
- Controller group definition modified
- Controller group hard reset by operator
- Controller group reload by operator
- Controller group soft reset by operator
- Controller hard reset by operator
- Controller lock power failed
- Controller lock power restored

- Controller module AC power failure
- Controller module AC power restored
- Controller module auxiliary power failure
- Controller module auxiliary power restored
- Controller module battery power failure
- Controller module battery power restored
- Controller module bell output failure
- Controller module bell output restored
- Controller module combus power failure
- Controller module combus power restored
- Controller module communication failure
- Controller module communication restore
- Controller module data received
- Controller module end transmission
- Controller module failure
- Controller module ground detect alarm
- Controller module ground detect restored
- Controller module input class A alarm
- Controller module input class A alarm restored
- Controller module input class A trouble
- Controller module input class A trouble restored
- Controller module input class B alarm
- Controller module input class B alarm restored
- Controller module input class B trouble
- Controller module input class B trouble restored
- Controller module off line
- Controller module on line
- Controller module phone line #1 failure
- Controller module phone line #1 restored
- Controller module phone line #2 failure
- Controller module phone line #2 restored
- Controller module restored
- Controller module tamper alarm
- Controller module tamper restored
- Controller module trouble
- Controller module trouble restore
- Controller module/combus power failure
- Controller module/combus power restored
- controller not assigned requested by operator
- Controller or module not assigned
- Controller passback forgiven by operator
- Controller power supply restored
- Controller power supply trouble
- Controller pre-alarm AC power failure
- Controller pre-alarm AC power restored
- Controller reader power control restored
- Controller reader power control trouble
- Controller reader power failure
- Controller reader power reset by operator
- Controller reader power restored
- Controller reader/keypad unlocked by operator
- Controller reload failure
- Controller reloaded by operator
- Controller slave communication failure
- Controller slave communication restored
- Controller soft reset by operator
- Controller startup
- Controller successfully reloaded
- Controller trouble
- Controller trouble restored
- Create a daypass card
- Data backup automatic
- Data backup automatic - Completed
- Data backup automatic - Failed
- Data backup by operator
- Data merged from redundancy server
- Data restored by operator
- Data restored from redundancy server
- Date and time modified
- Decrement card counter
- Device connection denied, Unknown MAC address
- Device low battery 4204
- Device reloading data by operator
- Disconnect modem
- Disconnect remote site
- Door alarm - alarm interface
- Door alarm on re-lock
- Door alarm restored- alarm interface
- Door armed - alarm interface
- Door armed by operator
- Door closed/normal condition
- Door contact disabled by operator
- Door contact disabled by operator
- Door contact enabled by operator
- Door contact returned to schedule by operator
- Door definition modified
- Door Disarmed - alarm interface
- Door disarmed by operator
- Door entry delay end - alarm interface
- Door entry delay start - alarm interface
- Door exit delay end - alarm interface
- Door exit delay start - alarm interface
- Door forced alarm
- Door forced alarm restore
- Door forced open
- Door forced open restored
- Door group armed by operator
- Door group contact disabled by operator
- Door group contact disabled by operator
- Door group contact enabled by operator
- Door group contact returned to schedule by operator
- Door group definition modified
- Door group disarmed by operator
- Door group lock by input
- Door group locked by operator
- Door group one time access by operator

- Door group returned to schedule by operator
- Door group temporarily unlocked by operator
- Door group unlock by input
- Door group unlocked by operator
- Door lock by alarm system armed
- Door lock by input
- Door lock device failure
- Door lock device normal condition
- Door locked by alarm system armed
- Door locked by operator
- Door locked by schedule
- Door one time access by operator
- Door open too long
- Door Reader keypad activation by keypad key
- Door relock
- Door returned to schedule by operator
- Door temporarily unlocked by operator
- Door toggle by operator
- Door unlock by input
- Door unlocked by event
- Door unlocked by operator
- Door unlocked by schedule
- Door unlocked temporarily by event
- Double swipe action denied
- Double swipe action granted
- Duress alarm
- Elevator door floor group disabled by operator
- Elevator door floor group enabled by operator
- Elevator door group group floor group disabled by operator
- Elevator door group group floor group enabled by operator
- Elevator interface failure
- Elevator interface override disabled
- Elevator interface override enabled
- Elevator interface restore
- End reloading, GSI procedure
- End reloading, Server procedure
- End Server
- End Workstation
- End Workstation Serveur abnormal disconnection
- End Workstation Serveur normal disconnection
- Ending of a guard tour
- Enroll a connection on Server
- Entry delay
- Entry delay expired
- Error reloading, GSI procedure
- Error reloading, Server procedure
- Event buffer full at 70 percent
- Event buffer overflow
- Event parameter definition modified
- Event relay definition modified
- Exit delay
- Export video request
- External command
- External NCC stopped by operator
- Failed to reach IP device
- Failsoft mode off
- Failsoft mode on
- Fire key alarm
- Fire key alarm restore
- Floor definition modified
- Floor group activated by input
- Floor group activation by input denied
- Floor group definition modified
- Floor group manually disabled
- Floor group manually enabled
- Graphic definition modified
- GSI definition modified
- Guard tour alarm
- Guard tour definition modified
- Guard tour late time delay modified
- Guard tour scheduled
- Guard tour sequence modified
- Guard tour station
- Guard tour station late
- Hard reset controller
- Historical report definition modified
- Holiday definition modified
- Home automation trouble
- Increment card counter
- Initialize modem
- Input activated
- Input activated 'Return to service'
- Input continuous supervision by operator
- Input deactivated
- Input definition modified
- Input group continuous supervision by operator
- Input group definition modified
- Input group return to normal by operator
- Input group return to schedule by operator
- Input group reverse condition by operator
- Input group shunted by input
- Input group shunted by operator
- Input group shunted temporarily by operator
- Input group unshunted by input
- Input in alarm
- Input in alarm 'Return to service'
- Input in pre-alarm
- Input in trouble
- Input restored or in normal condition
- Input return to normal by operator
- Input return to schedule by operator
- Input reverse condition by operator
- Input shunt toggle by operator
- Input shunted by input
- Input shunted by operator
- Input shunted on disarm - alarm interface

Input shunted on entry delay - alarm interface  
 Input shunted on exit delay - alarm interface  
 Input shunted temporarily  
 Input shunted temporarily by operator  
 Input tamper in alarm  
 Input tamper restored  
 Input trouble restored  
 Input unshunted  
 Input unshunted by input  
 Input unshunted on disarm - alarm interface  
 Input unshunted on entry delay - alarm interface  
 Input unshunted on exit delay - alarm interface  
 Input unshunted temporarily  
 Instruction definition modified  
 Invalid family card  
 Invalid floor selection  
 Invalid keypad code  
 IP device - Update platform  
 IP device communication failed  
 IP device communication restored  
 KAP Expiry Reminder  
 KT-400 firmware manual flashing by operator  
 KTES alarm duress  
 KTES call not initialize by do not disturb option  
 KTES custom language reload  
 KTES local database modified  
 KTES VUI programming access denied  
 KTES VUI programming access granted  
 KTES VUI programming exit  
 KTES VUI programming invalid keypad code  
 KT-NCC - AC power failure  
 KT-NCC - AC power restored  
 KT-NCC - AC power supply trouble  
 KT-NCC - Auxiliary power failure  
 KT-NCC - Auxiliary power restored  
 KT-NCC - Battery not connected  
 KT-NCC - Battery power critical  
 KT-NCC - Battery power failure  
 KT-NCC - Battery power restored  
 KT-NCC - Event buffer normal  
 KT-NCC - Event buffer overflow  
 KT-NCC - Hard reset by operator  
 KT-NCC - Relay activated by an event  
 KT-NCC - Relay deactivated by an event  
 KT-NCC - Relay temporarily activated by an event  
 KT-NCC - Shutdown on critical low battery  
 KT-NCC - Soft reset by operator  
 KT-NCC - Tamper in alarm  
 KT-NCC - Tamper restored  
 KT-NCC - Update platform CE  
 Last station in guard tour  
 Login on Server  
 Login on Smartlink

Login on Workstation  
 Logout on Server  
 Logout on Smartlink  
 Logout on Workstation  
 Loop communication failure  
 Loop communication restore  
 Loop communication trouble  
 Loop definition modified  
 Macro maker manually executed  
 Macro maker modified  
 Manual log add by operator  
 Master Account modified  
 Message view definition modified  
 Modem site bad UCK  
 Modem site callback failed  
 Modem site callback on buffer  
 Modem site callback on schedule  
 Modem site callback priority call  
 Modem site connection  
 Modem site connection failed  
 Modem site connection time  
 Modem site disconnection  
 Modem site dial  
 Modem site fail to report  
 Modem site first initialisation  
 Modem site invalid command  
 Modem site wait for callback  
 Modify an enroll connection on Server  
 Muster report modified  
 NCC communication failed  
 NCC communication restored  
 NCC program updating  
 New video search  
 No dial tone  
 No response from tenant  
 NTM definition modified  
 Operator definition modified  
 Operator disabled  
 Panel AC trouble  
 Panel AC trouble restore  
 Panel Battery trouble  
 Panel Battery trouble restore  
 Panel Communication failure  
 Panel Communication restore  
 Panel component modified  
 Panel modified  
 Partition alarm  
 Partition alarm key alarm  
 Partition alarm key alarm restore  
 Partition fire key alarm  
 Partition fire key alarm restore  
 Partition manually armed  
 Partition police key alarm

- Partition police key alarm restore
- Phone line busy
- Phone line failure
- Phone line failure
- Phone line restore
- Phone line restored
- Playback request
- Police key alarm
- Police key alarm restore
- Postal lock request denied by interlock
- Postal lock request denied by schedule
- Postal lock request granted
- Postponement delay manually modified
- Pre-Alarm on Door Open Too Long
- Programmable message #1
- Programmable message #10
- Programmable message #2
- Programmable message #3
- Programmable message #4
- Programmable message #5
- Programmable message #6
- Programmable message #7
- Programmable message #8
- Programmable message #9
- Quick report request by operator
- Reader disabled by operator
- Reader enabled by operator
- Reader group disabled by operator
- Reader group enabled by operator
- Reader low power
- Reader low power restored
- Reader or Keypad locked
- Reader or Keypad unlocked
- Reader restarted
- Reader's antenna - back to back voltage
- Reader's antenna - no voltage
- Reader's antenna - normal voltage
- Rebuild Card Last Transaction file
- Recording parameters modified
- Recording requested by operator
- Redundancy Server Shutdown
- Registration connection failed
- Registration connection granted
- Registration requested
- Relay activated by alarm system
- Relay activated by an event
- Relay activated by full area
- Relay activated by input
- Relay activated by open area
- Relay activated by operator
- Relay activated by schedule
- Relay deactivated after temporarily action
- Relay deactivated by alarm system
- Relay deactivated by an event
- Relay deactivated by close area
- Relay deactivated by input
- Relay deactivated by not full area
- Relay deactivated by operator
- Relay deactivated by schedule
- Relay definition modified
- Relay group activated by alarm system
- Relay group activated by an event
- Relay group activated by full area
- Relay group activated by input
- Relay group activated by open area
- Relay group activated by operator
- Relay group deactivated by alarm system
- Relay group deactivated by an event
- Relay group deactivated by close area
- Relay group deactivated by input
- Relay group deactivated by not full area
- Relay group deactivated by operator
- Relay group definition modified
- Relay group returned to schedule by operator
- Relay group temporarily activated by alarm system
- Relay group temporarily activated by an event
- Relay group temporarily activated by input
- Relay group temporarily activated by operator
- Relay returned to schedule by operator
- Relay temporarily activated by alarm system
- Relay temporarily activated by an event
- Relay temporarily activated by door access extended delay
- Relay temporarily activated by input
- Relay temporarily activated by keypad key
- Relay temporarily activated by operator
- Relay toggle by operator
- Remaining time remove by operator
- Remove from connection list
- Report aborted
- Report aborted not enough free disk space
- Report request by operator
- Report successfully completed
- Request to arm denied - alarm interface
- Request to arm granted - alarm interface
- Request to disarm - alarm interface
- Request to exit denied
- Request to exit denied by Interlock
- Request to exit granted
- Request to postpone denied - alarm interface
- Request to postpone granted - alarm interface
- Reset global interlock by operator
- Reset modem
- Roll call report modified
- Schedule definition modified
- Security level definition modified
- Server Communication Failed



- Server Communication Restored
- Server notification
- Server shutdown by workstation
- Set card counter
- Site definition modified
- Smartlink command
- Smartlink operator switch to an account
- Smartlink security issue
- Soft reset controller
- Start recording by video trigger
- Start recording requested by operator
- Start Server
- Start Workstation
- Start Workstation Server connection
- Stop recording by timer
- Stop recording by video trigger
- Stop recording requested by operator
- Supervision restored - reader found
- Swap database description
- System Bell alarm in trouble
- System Bell alarm trouble restore
- System status request
- System tamper
- System tamper restore
- Tamper switch in alarm
- Tamper switch in alarm
- Tamper switch restored
- Tamper switch restored
- Tenant group modified
- Tenant traced
- Time and Attendance backup automatic
- Time and Attendance backup automatic - Completed
- Time and Attendance backup automatic - Failed
- Time and Attendance backup by operator
- Time and attendance entry
- Time and attendance exit
- Time and attendance manually modified
- Time and attendance merged from redundancy server
- Time and attendance report modified
- Time and Attendance restored by operator
- Time and attendance restored from redundancy server
- Time-out on access granted
- Timeout on access granted (Tenant)
- Timeout on access granted by tenant
- Time-out on floor selection
- Time-out on keypad
- Timeout on manually unlock
- Timeout on postal lock request
- Timeout on REX
- Timeout on waiting second card
- TLM Line 1 trouble
- TLM Line 1 trouble restore
- TLM Line 2 trouble
- TLM Line 2 trouble restore
- Transfert firmware files
- Trigger group modified
- Trigger modified
- Triple swipe action denied
- Triple swipe action granted
- Two-wire smoke alarm
- Two-wire smoke alarm restore
- Two-wire smoke trouble
- Two-wire smoke trouble restore
- Unlock overridden by door armed
- Update all site
- Update data to site
- Valid floor selection
- Verify Database Hierarchy On Server
- Verify Database Index On Server
- Verify Database Integrity On Server
- Verify database integrity on Workstation
- Verify Database Link On Server
- Video event backup automatic
- Video event backup automatic - Completed
- Video event backup automatic - Failed
- Video event backup by operator
- Video event merged from redundancy server
- Video event restored by operator
- Video event restored from redundancy server
- Video failed to saved
- Video record modified
- Video sent to Video Vault by operator
- Video Server archive disabled by operator
- Video Server archive enabled by operator
- Video Server communication failed
- Video Server communication restored
- Video Server modified
- Video Server special report
- Video trigger modified
- Video Vault no more disk space
- Video Vault reach disk space threshold
- Video View modified
- View active report
- View Command Log On Server
- View Connection On Server
- View current recording
- View data explorer
- View Error Log On Server
- View Workstation status
- Waiting for keypad
- Waiting second card
- Waterflow alarm
- Waterflow alarm restore
- Waterflow trouble
- Waterflow trouble restore
- Wireless button battery power failure

Wireless button battery power restored  
Wireless button selection number  
Wireless key low battery trouble  
Wireless key low battery trouble restore  
Workspace modified  
Workstation lock by operator  
Workstation operator switch to an account  
Workstation unlock by operator  
Zone alarm  
Zone alarm restore  
Zone fault  
Zone fault restore  
Zone tamper  
Zone tamper restore

